



640 North El Dorado Street Stockton, CA 95202 Phone (209)943-0991 Fax (209)943-7923

www.wildhorses4x4.com

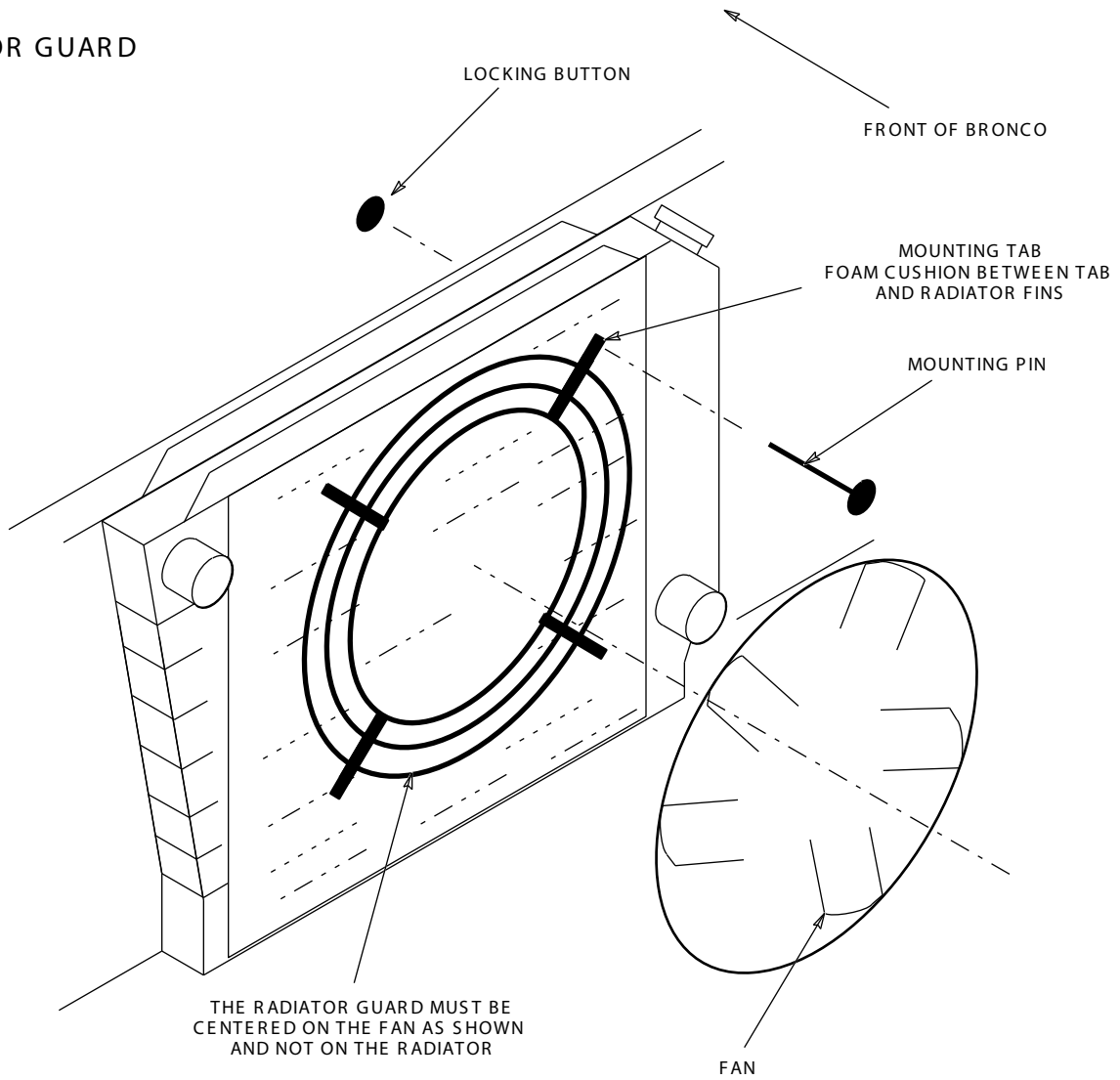
Radiator Guard

#5002 Date 12/29/04 rev. 0

CAUTION: Radiator fins and tubes are easily damaged. Take great care in attaching the Radiator Guard your radiator.

1. Remove the two top screws and loosen the two bottom two screws securing the fan shroud to the radiator.
2. Carefully lift the fan shroud up and off of the lower mounting screws.
3. Move the fan shroud over the fan and secure it so you have access to the radiator.
4. Remove the strips from the adhesive on the foam cushion and attach one to each of the Fan Guard mount tabs. The foam cushion must be attached on the side of the mounting tabs opposite the rings.
5. Carefully slide the Fan Guard between the fan and radiator making sure that the foam on the mounting tabs is against the radiator fins.
6. Position it in the approximate center of the fan, **NOT THE CENTER OF THE RADIATOR** (see illustration).
7. Hold the Fan Guard against the radiator and carefully insert a mounting pin thru the fan guard mounting tabs and thru the radiator fins.
8. From the front of the radiator, slip a securing button over each of the mounting pin and slide against the radiator.
NOTE: The mounting pins and mounting buttons are one time use only, so carefully align the Radiator Guard prior to placing the securing buttons.
9. From the front of the radiator, grasp the mounting pin with a pair of pliers and pull the mounting pin to compress the foam on the fan guard by approx 50%. The mounting tab foam must be compressed to hold the fan guard under tension or vibration could cause radiator damage. Slide the securing tab snug against the radiator fins.
10. Repeat this for the other three mounting tabs.
11. Trim the mounting pin about 1/2" from the securing button.
12. Carefully position the fan shroud over the two lower mounting screws.
13. Reinstall the top two mounting screws.
14. Carefully tighten the fan shroud mounting hardware.

RADIATOR GUARD



NOTE:
FAN SHROUD NOT SHOWN FOR CLARITY.
POSITION OF THE FAN MOVED BACK FOR CLARITY.